

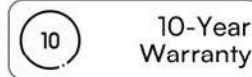
# EG4 PowerPro WallMount

14.3kWh-48v 280Ah All Weather Battery

Take Control of Your  
Energy Storage



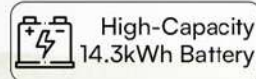
Comprehensive  
Certifications



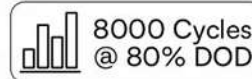
10-Year  
Warranty



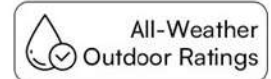
Enhanced Safety  
Total E-Stop



High-Capacity  
14.3kWh Battery



8000 Cycles  
@ 80% DOD



All-Weather  
Outdoor Ratings

Introducing the EG4 PowerPro WallMount All Weather Battery - the ultimate energy storage solution for all your solar power needs. This cutting-edge 48V 280Ah Lithium Iron Phosphate (LiFePO4) battery redefines reliability and performance, ensuring your power supply remains uninterrupted.

## Reliable

- Smart and intelligent BMS for reliability, efficiency and safety
- Integrated self-heating features when needed in low temperature
- Constant discharge current 200A

## All-Weather Design

- Perfect for outdoor applications, built to withstand various weather conditions
- Integrated self-heating feature ensures optimal battery performance in low temperatures

## Seamless Integration

- Can pair with any inverter in the market  
Designed to pair seamlessly with EG4, Victron, Growatt, Megarevo, Luxpower, Deye, and Sol-Ark inverters
- Onboard LCD touch screen for easy BMS monitoring & comm.
- Quick connect battery cables for fast, safe, reliable connections

## Technical Specifications

- **Model name:** PowerPro WallMount All Weather Battery
- **Battery Type:** LiFePO4 (Lithium Iron Phosphate, Grade A)
- **Voltage:** 48V (Nominal: 51.2V, Float: 54V)
- **Continuous Charge/Discharge Current:** 200A (Max)
- **Capacity:** 14.3kWh
- **BMS:** 200A
- **Weight:** 308.6 lbs. / 140Kg
- **Dimensions:** See diagram for detail (in inches)

## Confident Power

- 10kW delivery, with peak power 10.5kW (10 sec.) & 15.4kW (3 sec.)
- Constant discharge current – 200A
- Over 8000 cycles at 80% DOD with an 82.6Mwh lifetime production

## Safety

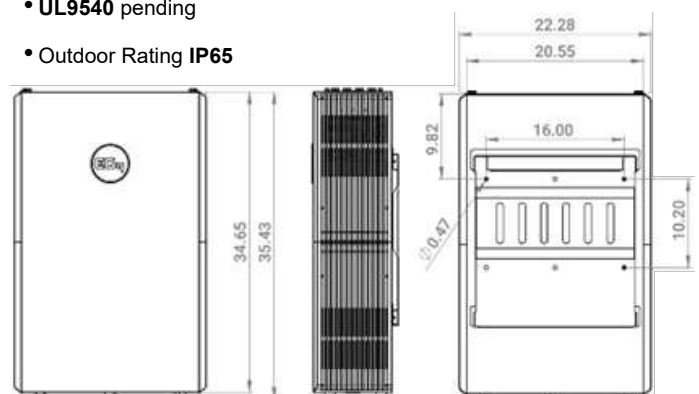
- Dual onboard fire arrestors offer fail-safe protection
- Innovative **Total Emergency Stop** function for instant shut down by RSD / ESS disconnect / inverter RSD
- 10-year warranty offered by EG4 electronics

## PowerPro ESS

- Optional conduit box addon makes installation with an EG4 18kPV simple
- Turn any PowerPro into a fully capable Energy Storage System when paired with an EG4 18kPV
- No thermal monitoring, or ventilation needed
- No maintenance

## Comprehensive Certifications

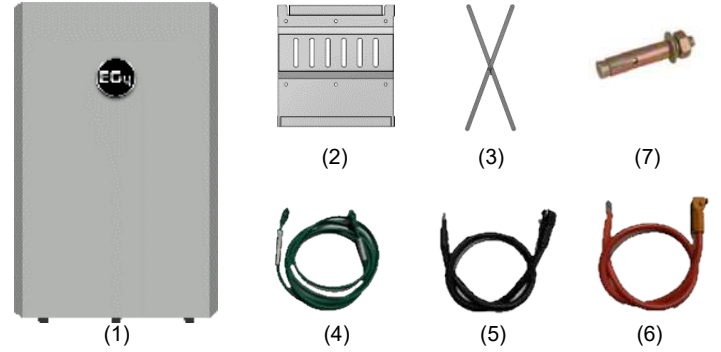
- **UL9540A** on cell, components, and unit level. **UL1973** on cell and module.
- **UL9540** pending
- Outdoor Rating **IP65**



## FAQ

- What is PowerPro Wallmount?  
It is a 48V LFP battery, 16 cell 280Ah with capacity of 14.3kWh.
- Is it battery or inverter or combination of both?  
PowerPro Wallmount is a LFP battery
- Can I use any inverter in the market with this battery?  
Yes, you can.
- What's the recommended inverter for this battery?  
EG4-18kPV with the conduit box.
- Can I add multiple WallMounts together?  
Yes, you can do that in parallel. Each battery is provided with 4 connection slots that can accommodate 2/0 wires. You can daisy chain them for your scalability needs.
- What connection cables does it come with?  
Each battery comes with two sets of outdoor rated battery connectors 2/0 size (amphenol or equivalent) at one end going to the battery and the other end going to the inverter. The inverter end of the wire is not amphenol connector.
- What cable to use for paralleling the batteries?  
Parallel kit (sold separately) can connect multiple batteries in parallel. Both ends of these cables are weather rated connectors (amphenol or equivalent)
- Can I install the battery above the ground?  
Yes, the battery can be installed above the ground. Ensure proper mounting procedures listed in the manual.
- Do I need X-bracket for all my battery installations?  
You only need X-bracket for reference when installing EP-18kPV along with the battery.
- Do I need conduit box for every battery installation?  
You only need conduit box for the 18kPV installation. However, it's a highly recommended accessory for each battery to ensure all the conduits are hidden for professional look.
- How many PowerPro WallMounts do I need for my 18kPV?  
Up to 3 can be used with a single 18kPV.
- How do I upgrade the firmware?  
You'll need to use a RS485 to USB cable along with the BMS Tools software.  
Firmware from EG4's website can be installed using this program.
- How can I access the BMS on my computer?  
BMS Tools provides access to the BMS information. You'll need to use an RS485 to USB cable.

## Packaging List

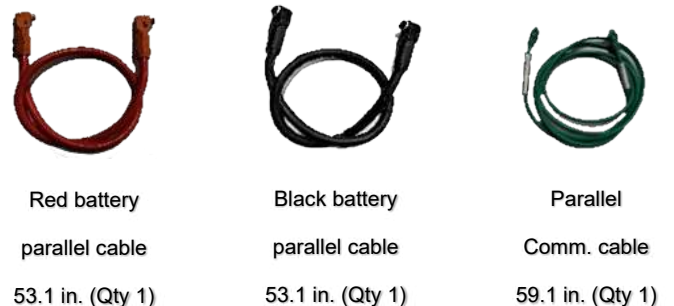


- (1) 280Ah PowerPro WallMount All Weather Battery (Qty 1)
- (2) Mounting bracket for PowerPro WallMount All Weather Battery (Qty 1)
- (3) X-bracket to align EG4-18kPV with PowerPro WallMount Battery (Qty 1)
- (4) Battery to inverter communication cable (Qty 1)
- (5) Black power cable 2/0 39.4in to connect inverter negative terminal (Qty 2)
- (6) Red power cable 2/0 39.4in to connect inverter positive terminal (Qty 2)
- (7) Concrete expansion bolts M8x70 (Qty 6)

### The following items are included in the **Optional conduit box kit**



### The following items are included in the **Optional battery parallel kit**



## Contact us

Website: [www.eg4electronics.com](http://www.eg4electronics.com)  
Email: [support@eg4electronics.com](mailto:support@eg4electronics.com)  
Phone: +1 (903) 609-1988

# EG4 ELECTRONICS